

OUR FOOTPRINT

GREENHOUSE GAS BALANCE OF THE AMANN GROUP

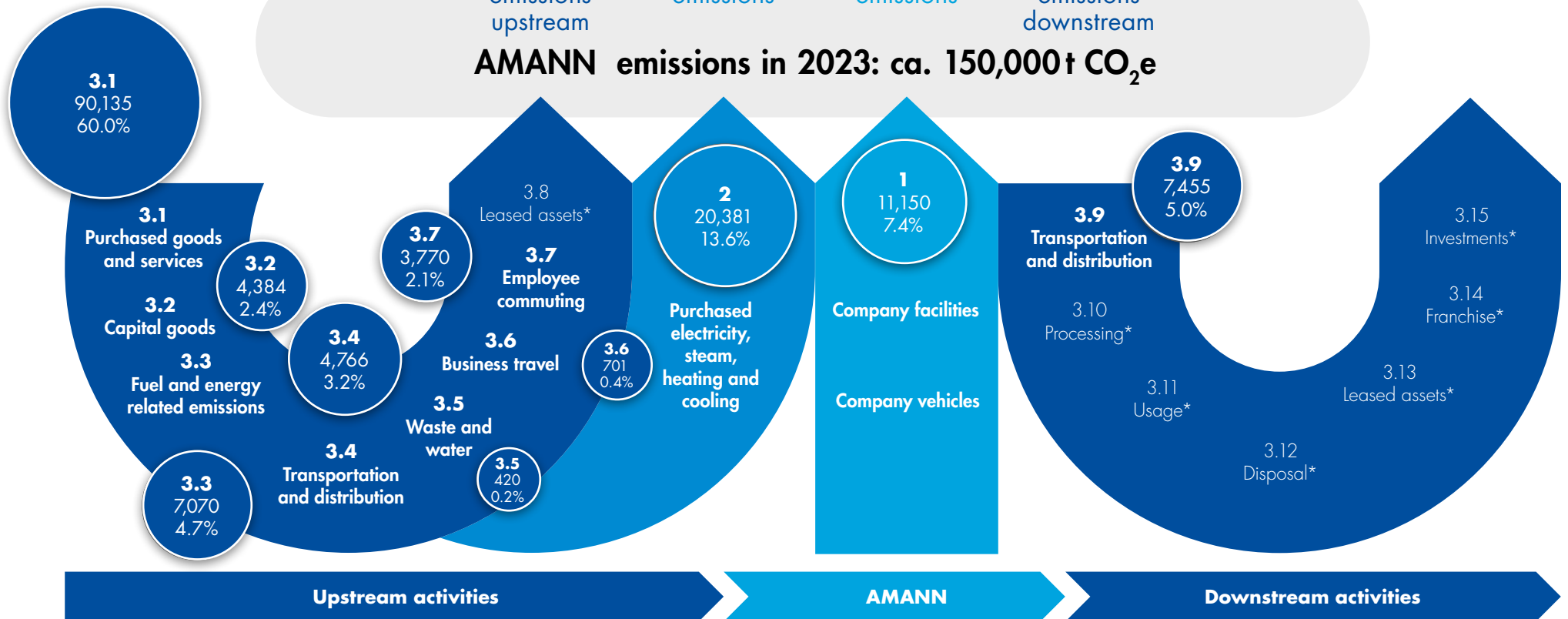
Scope 3
Indirect
emissions
upstream

Scope 2
Indirect
emissions

Scope 1
Direct
emissions

Scope 3
Indirect
emissions
downstream

AMANN emissions in 2023: ca. 150,000 t CO₂e



2022 is our base year with approx. 183,000 t CO₂e.

*In the materiality analysis, categories 3.8 and 3.10 to 3.15 were identified as not relevant for AMANN.

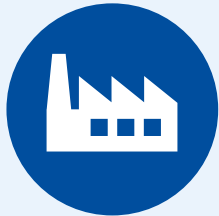
GREENHOUSE GAS PROTOCOL (GHGP) SCOPE 1, 2 AND 3

The central basis for achieving the net-zero target in 2050 and active climate management is knowing your own greenhouse gas balance.

AMANN uses the Greenhouse Gas Protocol (GHG Protocol), divided into the emission categories Scope 1, 2 and 3, as the basis for determining Group-wide greenhouse gas emissions.

Our Corporate Carbon Footprint (CCF) ensures transparency and traceability across all relevant categories.

SCOPE 1



DIRECT OWN EMISSIONS

Includes **direct** emissions from facilities at the AMANN sites e.g. from fuels in energy plants or vehicles, or also volatile gases.

SCOPE 2



INDIRECT ENERGY EMISSIONS

Includes **indirect** emissions at AMANN locations, e.g. from purchased energy such as electricity, heat and steam

SCOPE 3 Upstream



EMISSIONS ALONG THE SUPPLY CHAIN

Includes significant **upstream** emissions along the AMANN value chain, e.g. through purchased goods and services, logistics, business travel, waste and water.

SCOPE 3 Downstream



EMISSIONS IN THE PRODUCT USE PHASE

Includes significant **downstream** emissions along the AMANN value chain, e.g. through the transport of finished goods